

44



 **AQUILA**

**44 YACHT POWER CATAMARAN**

# 44

## YACHT POWER CATAMARAN

The Aquila 44 Yacht is a power catamaran with a fresh evolution of classic boating traditions. Efficiency in design and performance compliment her luxurious, spacious living.

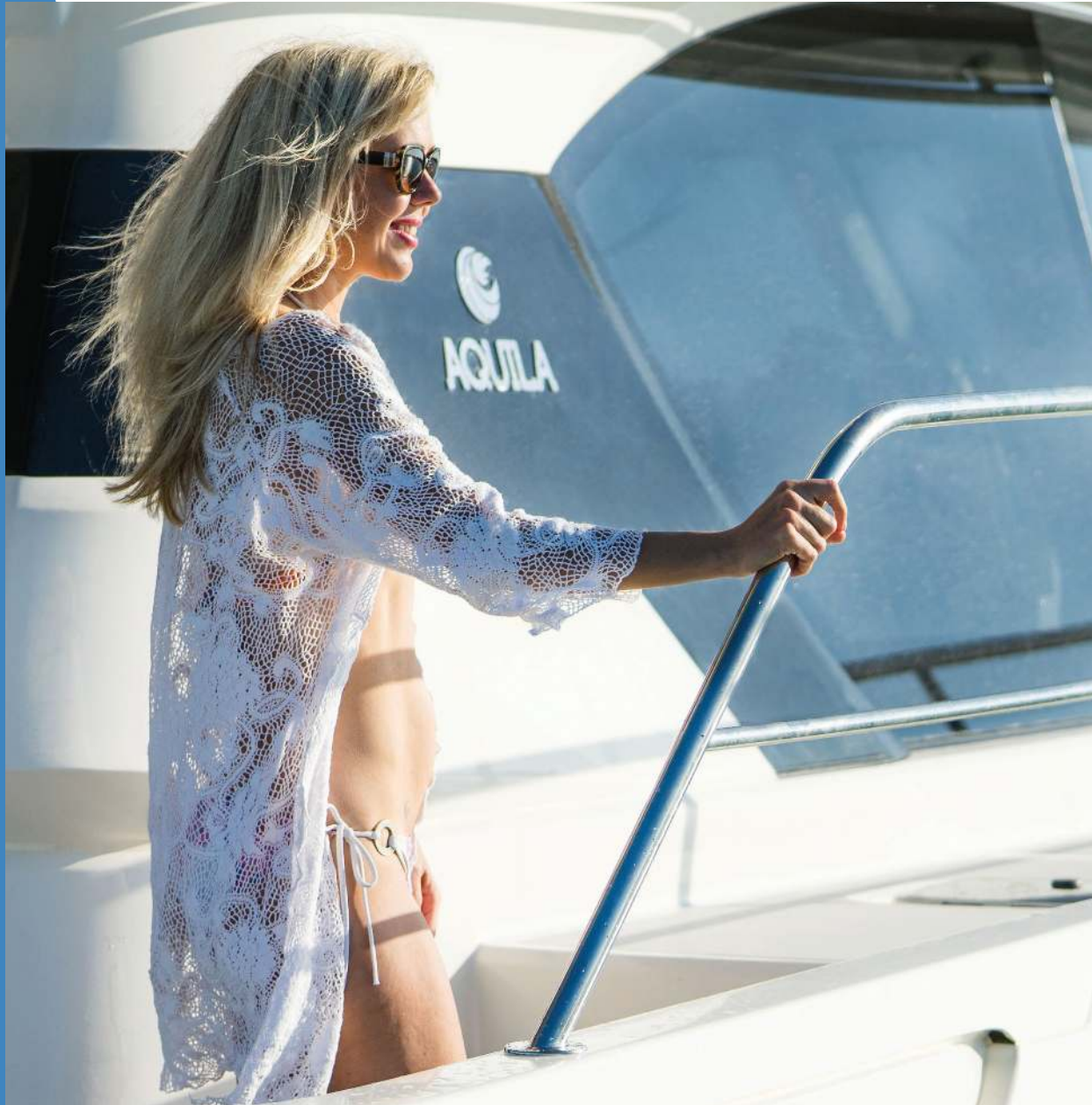
The Aquila 44 Yacht is available with 3 or 4 cabin layouts featuring a salon and galley with 360° views and an extensive flybridge.

Customization options are available to meet an array of boating lifestyles.





AQUILA 44 YACHT POWER CATAMARAN







**ENJOY  
THE  
OUTDOORS.**



6

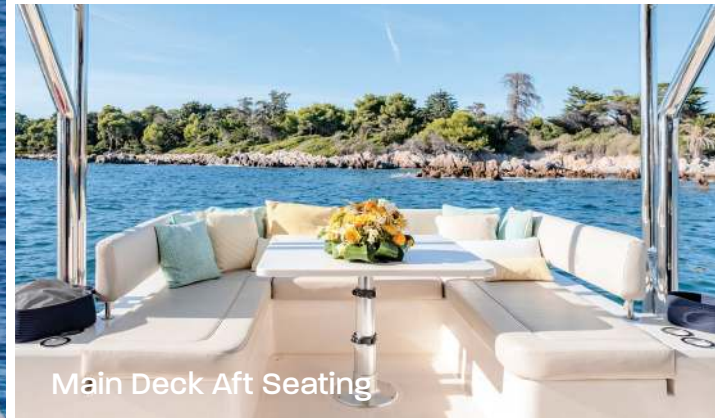
AQUILA POWER CATAMARANS



AQUILA 44 YACHT POWER CATAMARAN



Helm Station



Main Deck Aft Seating



Flybridge Wet Bar





Exclusive Bridge-to-Bow Steps



Large Opening Rear Galley Window



**BRIGHT.  
SPACIOUS.  
INVITING.**



360° View Salon



Navigation Station and Storage Cabinets



Optional Inside Helm Station



Galley Dining



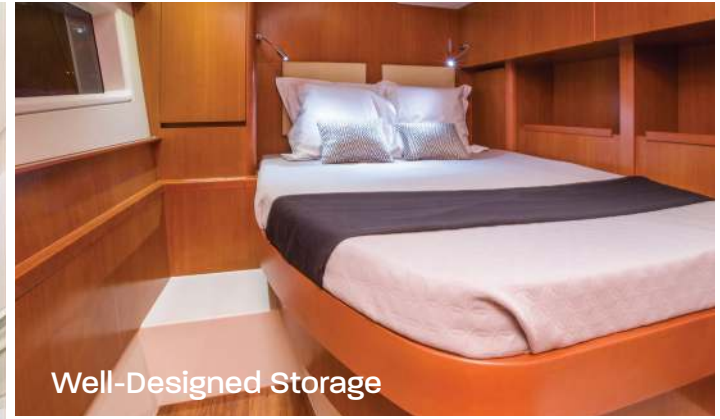
Full-Beam Master Cabin (3-Cabin Model)



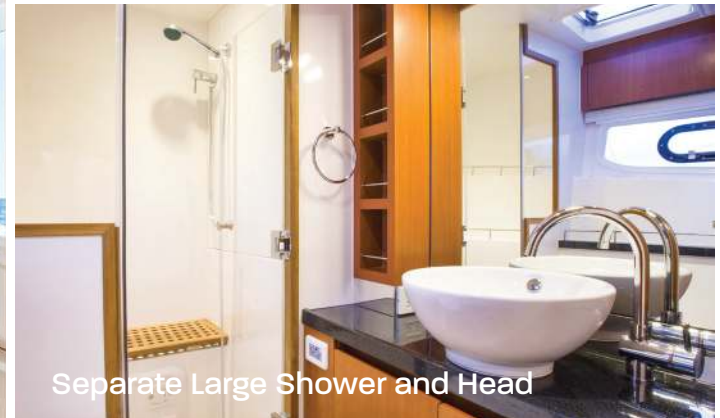
**RELAX.  
REFRESH.  
RENEW.**



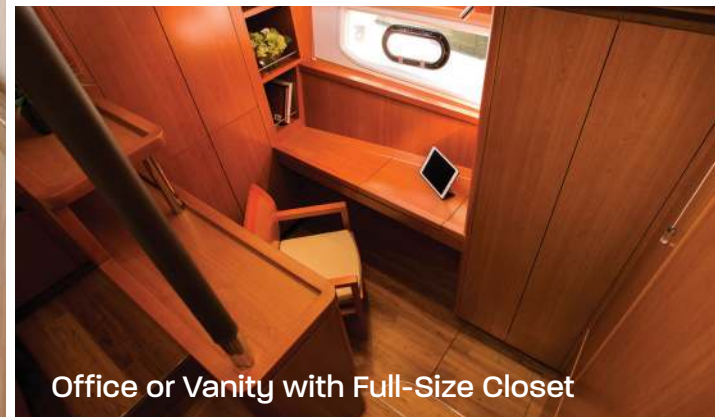
Spacious Guest Cabin



Well-Designed Storage



Separate Large Shower and Head



Office or Vanity with Full-Size Closet





Comfortable Forward Cabins (4-Cabin Layout)

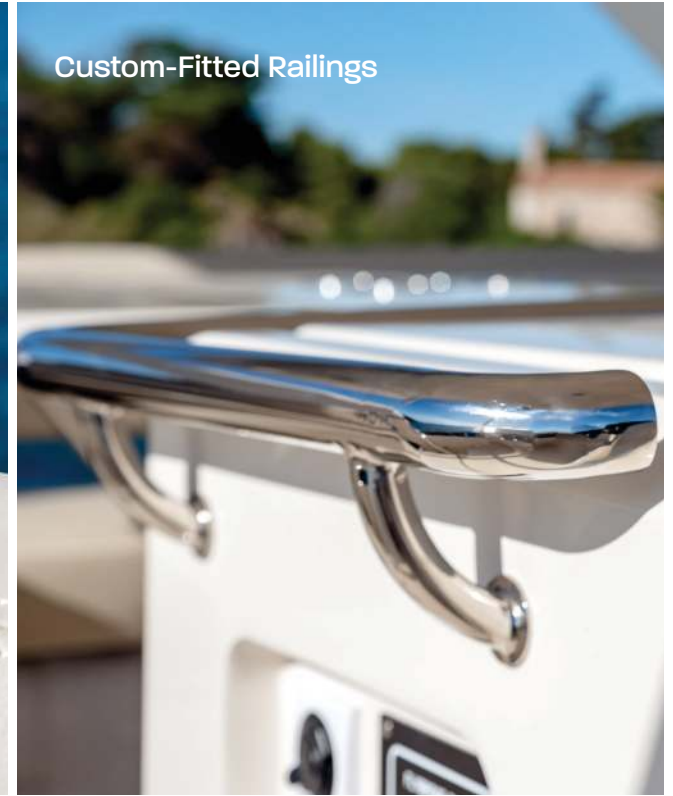
High-Quality Stainless Steel Hardware



Top-Stitched Upholstery



Custom-Fitted Railings



**QUALITY.  
INNOVATION.  
PERFORMANCE.**

Engineered Handrails

## SPECIFICATIONS

Length overall w/ swim & protection platform	<b>13.44 M / 44' 11"</b>
Beam overall	<b>6.56 M / 21' 6"</b>
Height above waterline w/ hard top	<b>5.70 M / 18' 8"</b>
Draft without sacrificial skegs	<b>1.0 M / 3' 3"</b>
Draft with sacrificial skegs	<b>1.16 M / 3' 10"</b>
Light displacement	<b>15,900 KG / 35,053 LB</b>
Fully loaded displacement	<b>22,000 KG / 48,500 LB</b>
Fuel tank	<b>1,120 L / 295 GAL</b>
Water tank	<b>780 L / 206 GAL</b>
Holding tank	<b>240 L / 63 GAL</b>
CE certification	<b>A (ocean):12 PAX</b>
	<b>B (offshore):12 PAX</b>
	<b>C (coastal):14 PAX</b>
	<b>D (inland):21 PAX</b>

### Propulsion

**2x D4 230 HP VOLVO PENTA DIESEL**  
**OPTIONAL 2x D4 320 HP VOLVO PENTA DIESEL**  
**OPTIONAL 2x 370 HP YANMAR 8LV DIESEL**



## CUSTOMIZATION OPTIONS

### CABINETRY



WILD CHERRY



OLIVEWOOD



AGED ASH

### FLOORING



TEAK



LIGHT CHERRY



ROSEWOOD

### COUNTER TOPS



BLACK QUARTZ

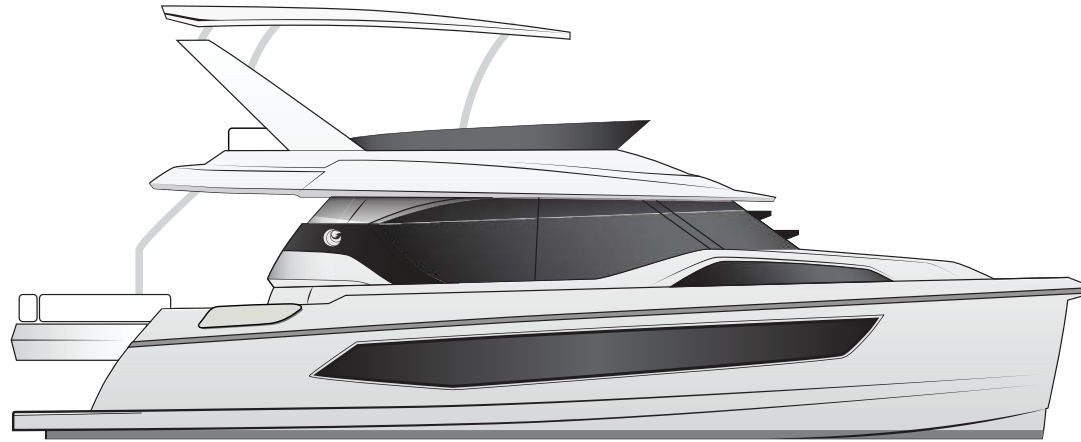


VANILLA CORIAN

*The specification measurements are approximate and subject to variance.  
 Actual color samples may vary slightly from digital representation.*

# 44

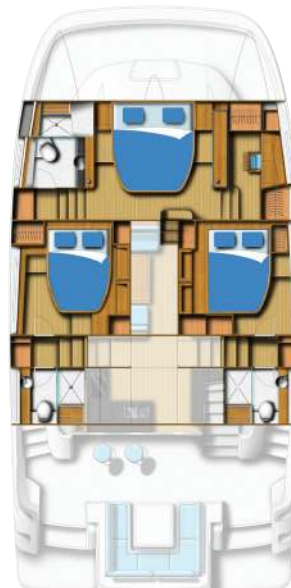
POWER CATAMARAN



**FLYBRIDGE**



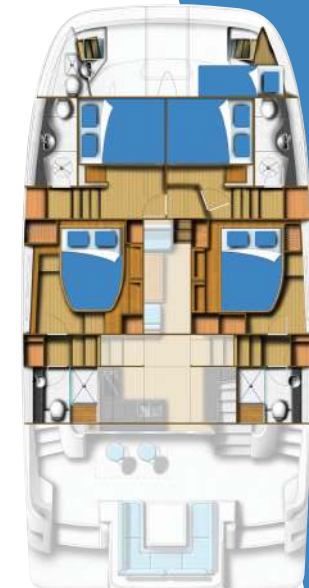
**MAIN DECK**



**3-CABIN**  
3 Heads \ 4 Showers



**3-CABIN +  
CAPTAIN'S QUARTERS**  
3 Heads \ 4 Showers



**4-CABIN +  
CAPTAIN'S QUARTERS**  
4 Heads \ 5 Showers





With over 40 years of manufacturing experience and the collaboration of multiple award-winning firms and designers, Aquila Power Catamarans is the recognized leader for innovation, quality, and performance in this growing category of pleasure boats.





 **AQUILA**  
aquilaboats.com

Copyright © 2023 Aquila Boats. All rights reserved.