

V

CLASS





EXPERIENCE THE
EXCEPTIONAL

Your yacht is an extension of yourself. A statement of your lifestyle. She needs to deliver unforgettable experiences for you, your family and friends. Every Princess yacht is designed with our forward-thinking mentality and crafted with meticulous attention to detail. So whether you're dashing across the water or moored in your favourite bay, you will recognise the difference our design and details make, inside and out.

Experience the exceptional.



CRAFTED IN PLYMOUTH

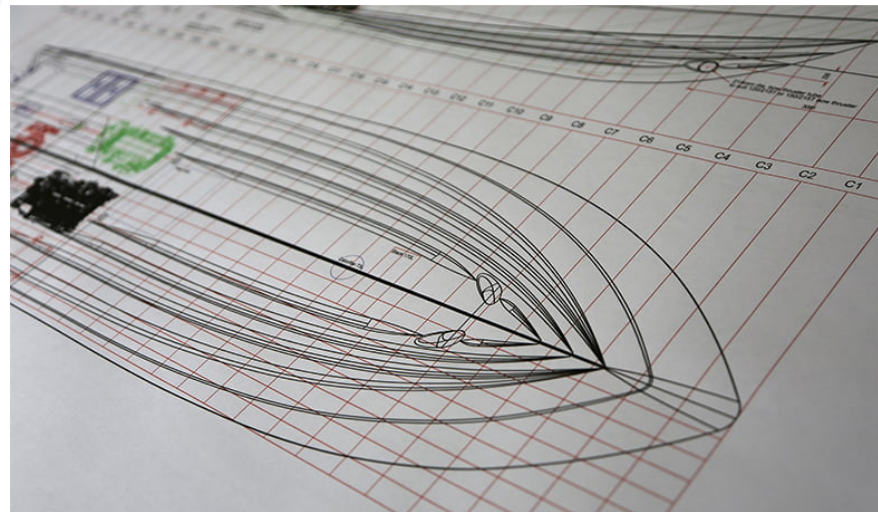
Perched on the edge of the English Channel lies the city of Plymouth, where we established our home in 1965. Today Princess shipyards cover an area of over 1.1 million square feet, an area rich in British maritime heritage. In fact, South Yard, where our X Class Super Flybridge yachts are constructed, is a former naval yard dating back to the 17th century. From the outset, our goal has been to meticulously sculpt our yachts around our owners' enjoyment of them. Such dedication and attention to detail resonates deeply with our Plymouth craftspeople.

Over 3,000 people, each possessing a mastery of their skill, fastidiously realise this vision in our shipyards. Through a culture of innovation, our yachts are not only some of the most technically-advanced in the world but also the most beautifully realised.



DEEPLY INGENUOUS THE PRINCESS DEEP-V HULL


Our pioneering deep-V hulls are born from our naval architect's obsession with exceptional seakeeping and voluminous space. Their sculpted form is shaped from a lightweight, resin-infused hull composite which can create greater internal volume compared to standard hull production methods. This ingenious design ensures it requires less power and burns less fuel to achieve its maximum design speed. Such precision thinking gives rise to the most exhilarating performance, defined by its efficiency, agility and poise. So whether you're slicing through the seas at 40 knots or navigating stormy waters - a foundation of superior engineering rides with you.





V CLASS

Take the helm and the variable geometry of the deep-V hull assuredly translates any surge of power into taut handling. Enjoy a spirited dash across the ocean in a Princess V Class, a paradox of responsive power and exclusive luxury.



V 65



Powerful and progressive, the exciting V65 sets a new standard. Her Olesinski-designed deep-V hull is optimised for greater lift and less drag, for lower planning speeds and greater efficiency. When entertaining, her spacious cockpit inspires relaxation with a sunpad and well-equipped dining area leading to the fully equipped aft galley. With five canopy blades to choose from and engines taking you up to 38 knots, the V65 is as vivacious as she is valiant.





Her flexible saloon can be climate controlled or opened to the elements via triple sliding aft doors and a retractable sunroof. Below deck, eight guests enjoy four beautifully appointed cabins all bathed in natural light from elegant hull glazing, with the option of a further single cabin aft for occasional guests or crew.





TAKE A VIRTUAL TOUR OF THE V65

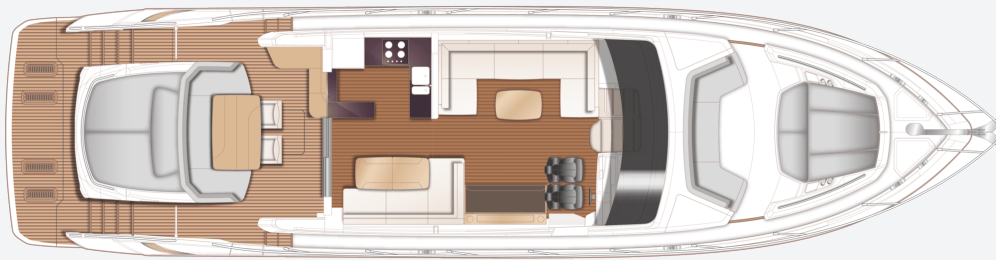


EXPERIENCE THE V65

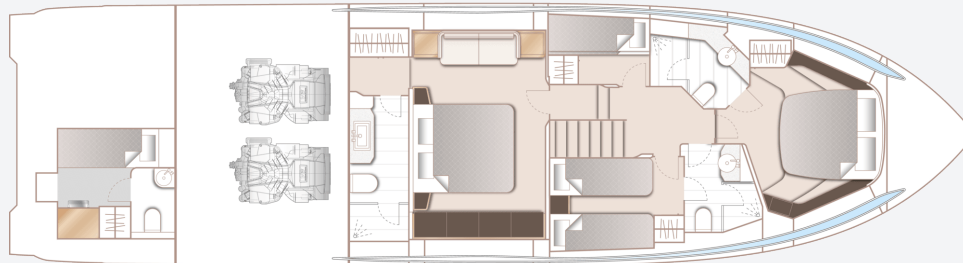




V65
SPECIFICATION



V65 Main Deck



V65 Lower Deck

PRINCIPAL DIMENSIONS

Length overall (incl. pulpit)	66ft 10in (19.34m)
Length overall (excl. pulpit)	65ft 11in (19.09m)
Beam	16ft 9in (5.08m)
Draft	4ft 9in (1.47m)
Displacement approx. (half load)	36,073kg (79,527lbs)*
Fuel capacity	902 gal/1,083 US gal/4,100l
Water capacity (incl. calorifier)	192 gal/230 US gal/873l

ENGINES

Twin MAN V12 (2 x 1,400mhp)	Speed range: 36-38 knots [†]
------------------------------------	--

FULL SPECIFICATION

DECK FITTINGS

- Teak-laid transom platform, cockpit deck and steps to side deck
- Reversible electric anchor winch with foredeck and helm position controls
- Stemhead roller with automatic anchor launch and retrieve
- Self-stowing (40kg/88lb) Delta anchor with 60m of chain
- Bow rope storage locker
- Freshwater deck/anchor wash
- Walk through coachroof seating area
- Foredeck sunbathing area with cushions and integrated adjustable headrests
- Deck storage lockers for fenders and foredeck sunbed cushions
- Stainless steel bow, stern and spring cleats (8)
- Stainless steel pulpit and guardrails
- Stainless steel coachroof handrails
- Foredeck escape hatch
- PVC rubbing band with stainless steel insert
- LED deck level lighting
- Illuminated crown logo to transom

- Full set of IMCO navigation lights
- Riding light
- Searchlight with remote control
- Twin electric horns
- Fuel and water fillers

COCKPIT AND BATHING PLATFORM

- Self draining
- U-shaped seating with teak folding table and folding director's chairs
- Sunbed aft
- Wetbar including barbecue, waste bin, top loading coolbox and storage
- LED overhead and deck level lighting
- Stainless steel handrails
- Garage (to take tender up to 3.3m) with electro-hydraulic door and tender launch system with electric winch
- Liferaft stowage locker
- Rope stowage lockers
- Lockable gas strut assisted hatch to lazarette
- Lockable gas strut assisted hatch to lazarette/ optional crew cabin

- Lockable gas strut assisted hatch to engine room
- Locker containing remote fuel cocks, manual bilge pump with valve chest and manual controls for automatic fire extinguishers
- Twin transom doors leading to bathing platform
- Electro-hydraulic raise/lower teak laid bathing platform (500Kg SWL)
- Retractable bathing ladder (manual) in side of hydraulic platform
- Transom steps to access stern from bathing platform when in lowered position
- Hot and cold transom shower
- Waterproof Fusion Signature 6.5" (2) speakers linked to saloon sound system
- 220/240v shore support inlet in locker
- Tonneau cover

HELM POSITION

- Twin helm seats with fore and aft adjustment and flip up base to helm seat
- Instrument console with 9" colour screen incorporating engine instrumentation, fuel

- gauges and rudder position indicator
- Instruments and controls at helm position:
 - power-assisted electro-hydraulic steering
 - adjustable steering wheel
 - rudder position indicator
 - high-speed magnetic compass
 - electronic engine controls
 - colour radar with GPS/chart plotter (twin 12.1" HD displays)
 - speed and distance log
 - Echo sounder with alarm
 - trim tab controls with indicators
 - bow thruster control
 - electric anchor winch remote control
 - autopilot
 - VHF with DSC R/T with intercom
 - remote control searchlight button
- Drinks holders
- Toughened glass screen (clear for night vision)
- Windscreen wipers
- Freshwater windscreen wash
- Exterior black mesh windscreen covers
- Bilge pump controls with visual pump running warnings
- 24v and 240v electrical control panel
- Riding light, helm and navigation light control

- switches
- USB connection point
- LED overhead lighting (24v) and night lighting
- Pantograph helmsman's side door to starboard side deck
- Timber Flooring (V groove planked)

SALOON

- U-shaped sofa to port
- Coffee table
- Sideboard unit with bottle and glass storage
- Refrigerator
- Icemaker
- 49" UHD LED TV on rise and fall
- Fusion Apollo MS-RA770 audio system with streaming capability, connected to Anthony Gallo speakers (4) and Fusion MS-AB206 subwoofer
- Electric drop window to port
- Blinds or sunscreens to all windows and doors
- Dimmable LED overhead and concealed lighting (24v)
- Access stairway to lower accommodation
- Electric opening roof with glazing and blinds
- Timber flooring (V groove planked)

DINING AREA

- L-shaped sofa
- Folding dining table
- Stainless steel framed sliding door to cockpit with integrated hinging window aft of galley
- Manual blinds or sunscreens to all windows and doors
- Dimmable LED overhead and concealed lighting (24v)
- Timber flooring (V groove planked)

GALLEY

- Solid surface counter top
- 4-zone ceramic induction hob
- Extractor fan
- Combination microwave/convection oven with grill
- Twin-bowl stainless steel sink with mixer tap
- Dishwasher
- Full height refrigerator/freezer (270l)
- Waste bin
- Drawers and storage cupboards
- Manual blinds or sunscreens to all windows and doors
- Dimmable LED overhead and task lighting (24v)
- 220/240v outlets (4)

- Timber flooring (V groove planked)

ACCOMMODATION

- All cabins and bathrooms feature opening portholes
- All cabins feature 220/240v power points
- All bathrooms feature electric freshwater toilets and 240v shaver points

OWNER'S STATEROOM

- Large double bed with drawers below
- Twin bedside tables
- Wardrobes with hanging and drawer storage
- Dressing table
- Mirror to vanity unit
- Sofa
- Storage lockers and drawers
- 40" UHD LED TV
- Fusion Apollo MS-RA770 audio system with streaming capability, connected to Focal 100 ICW6 speakers (4)
- Panoramic windows including opening porthole
- Manual tension venetian blinds
- LED overhead and concealed lighting (24v)
- Individual berth lights
- 220/240v outlets (2)

- USB charging point (1)
- Fitted carpet

EN-SUITE BATHROOM

- Washbasin with solid surface counter top
- Mirror
- Storage lockers
- Shower compartment with automatic pump out
- Extractor fan
- Window with opening porthole
- Manual tension venetian blind
- LED overhead and concealed lighting (24v)
- Bathroom accessories
- Flooring in solid surface

FORWARD STATEROOM

- Large double bed with drawers below
- Wardrobe with shelves
- Dressing table
- Mirror
- Storage lockers
- Window with opening porthole
- Manual tension venetian blind
- Deck hatch
- LED overhead and concealed lighting (24v)
- Individual berth lights

- 220/240v outlets (2)
- USB charging point (1)
- Fitted carpet

EN-SUITE BATHROOM

- Washbasin with solid surface counter top
- Mirror
- Storage lockers
- Shower compartment with automatic pump out
- Extractor fan
- Window with opening porthole
- Manual tension venetian blind
- LED overhead and concealed lighting (24v)
- Bathroom accessories
- Flooring in solid surface

STARBOARD GUEST CABIN

- Two single beds with drawers below (with option of double bed conversion)
- Bedside table
- Wardrobe with shelves
- Mirror
- Storage lockers and drawers
- Window with opening porthole
- Manual tension venetian blind
- LED overhead and concealed lighting (24v)

- Individual berth lights
- 220/240v outlets (2)
- USB charging point (1)
- Fitted carpet

EN-SUITE BATHROOM

- Washbasin with solid surface counter top
- Mirror
- Storage lockers
- Shower compartment with automatic pump out
- Extractor fan
- Window with opening porthole
- Manual tension venetian blind
- LED overhead and concealed lighting (24v)
- Bathroom accessories
- Flooring in solid surface
- Day access door from passageway

PORT GUEST CABIN

- Two single beds
- Wardrobe with shelf
- Mirror
- Storage lockers
- Window with opening porthole
- Manual tension venetian blind
- LED overhead and concealed lighting (24v)

- Individual berth lights
- 220/240v outlet (1)
- USB charging point (1)
- Fitted carpet

LOWER ACCOMODATION LOBBY

- Washer/dryer with storage area above located below companionway stairs (option of separate washing and drying machines if required)

OPTIONAL CREW CABIN (IN PLACE OF AFT LAZARETTE)

- Single bed with storage below
- Wardrobe with shelf
- Mirror
- Opening porthole
- LED overhead lighting (24v)
- Individual berth light
- 220/240v outlet (1)
- Non-slip safety flooring

EN-SUITE BATHROOM

- Washbasin with solid surface counter top
- Mirror
- Storage lockers
- Shower with automatic pump out

- Extractor fan
- LED overhead lighting (24v)
- Bathroom accessories

POWER AND DRIVE SYSTEMS

- 5-bladed propellers in nickel aluminium bronze
- Bow thruster (170kgf/375lbf) with single station controls
- Engine room lighting
- Engine room access hatch and ladder
- Power-assisted electro-hydraulic steering system
- Trim tabs with indicators
- Electronic engine and gear shift controls
- Engine room extractor fan with electronic time delay
- Fresh water supply point in engine room
- Dripless self aligning shaft seals

ELECTRICAL SYSTEMS

24 Volt:

- 4 x heavy duty batteries for engine starting
- 4 x heavy duty auxiliary batteries
- Battery link facility with remote control at helm position
- Both battery banks are charged using a voltage

sensitive relay that parallels both battery banks when a charging source is present

- 80 amp battery charger
- Remote battery master switches with control switch at main switch panel
- Circuit breakers on all circuits
- 12v voltage dropper for certain navigation and radio circuits

220/240 Volt:

- 13.5Kw diesel generator in own sound shield with water cooled specially silenced exhaust
- 63 amp shore support inlet
- Generator/shore support change-over switch
- Polarity check system
- Earth leakage safety trip
- Circuit breakers on all circuits
- Power points in: Owner's stateroom, guest cabins, galley and saloon area
- Shaver points in all bathrooms

FUEL SYSTEM

- Twin fuel tanks (in NS8 marine grade alloy) with interconnection system giving 902 gal / 1,083 US gal / 4,100l capacity
- Fuel fillers on port and starboard side decks

- High-capacity duplex fuel filters with water traps with change-over valves, water warning sensors connected to warning lights at helm console
- Remote fuel cocks in cockpit locker
- Fuel gauges at helm console

WATER SYSTEM

- Water tanks totalling 176 gal /211 US gal / 800l plus 16 gal /19 US gal / 73l hot water calorifier
- Water heated by engines and 240v immersion heater
- Automatic water pump with filter
- Main circuit breaker at switch panel
- Water level gauge
- Deck filler
- Electric freshwater toilet system with 60 gal /72 US gal / 272l holding tank, content gauge and low noise electric overboard discharge, with macerator backup system as well as dockside discharge system

FIRE EXTINGUISHERS

- Automatic/manual override fire extinguishers in engine room with warning system at helm position

- Hand-operated fire extinguishers (6) in owner's stateroom, forward, port and starboard guest cabins, galley and helm position
- Additional extinguisher fitted when optional aft cabin is specified

BILGE PUMPS

- Automatic/manual override electric bilge pumps in engine room (2), rudder area, lazarette and forward accommodation (6 in all)
- High-capacity manual bilge pump with valve system and suction points in same areas
- Electric bilge pumps have controls and warning lights at helm

OTHER STANDARD EQUIPMENT

- Ensign staff
- Fenders (6)
- Mooring warps (4)
- Boat hook
- First Aid kit
- Tool kit
- Owner's manual and engine manual
- Quilted bedspreads supplied to all cabins (except optional crew cabin)
- Set of glassware (8 settings consisting of

- tumbler and wine glasses)
- Set of Princess china (8 settings consisting of plate, side plate, bowl, cup & saucer)
- Set of cutlery (8 settings of David Mellor "Paris" cutlery 7 pieces)
- Ship's document case
- Anchor winch back up handle

- Optional crew cabin has Altro non-slip safety flooring, crew bathroom has white solid surface countertops

FINISHES

- Teak-laid decks to transom platform, cockpit deck and steps to side decks
- Timber-laid floor to galley, dining area, forward saloon and helm position
- Furniture in choice of Rovere Oak or Alba Oak in satin lacquer finish as standard. Silver Oak or Walnut in satin or gloss lacquer finish available as an option
- Solid surface floors in all bathroom suites in guest accommodation
- Solid surface wash hand basin counter tops in all bathroom suites in guest accommodation
- Galley counter top in solid surface
- Choice of high-quality carpet and upholstery fabric from extensive range
- Blinds or sunscreens to all windows and portholes