



C49

**Tiara**  
YACHTS

2024 STANDARDS & OPTIONS

# C49

## SPECIFICATIONS

L.O.A.....	50'3" - 15.31 m
(with Standard Swim Platform)	
Beam.....	15'4" - 4.67 m
Draft (fully loaded).....	4'2" - 1.27 m
Average Dry Weight.....	41,100 lbs - 18,642 kg
Height from Waterline to Top of:	
Hardtop.....	12'9" - 3.88 m
Radar Mount.....	13'2.5" - 4.04 m
Garmin® Radar.....	14'8" - 4.50 m
Anchor/Navigation Light.....	15'7" - 4.76 m
Fuel Capacity.....	500 Gallons - 1,893 L
Water Capacity.....	135 Gallons - 511 L
Holding Tank Capacity.....	68 Gallons - 257 L
Sleeping Accommodations.....	6
Deadrise at Transom.....	17°

## HULL AND DECK

- Tiara Yachts' transferable limited warranties: five years on hull and deck; two years on accessories
- Fresh white gelcoat deck
- Axalta® painted hull and bootline
- Two coats of anti-fouling black bottom paint
- Hull constructed with balsa cored hullsides and hand-laid fiberglass using premium resin
- Deck constructed with a gelcoat outer layer, balsa and hand-laid fiberglass using premium resin
- Deck side engine air intake system with built-in step for boarding
- Bronze seacocks on all underwater thru-hull fittings
- Tiara custom diamond pattern non-skid deck and cockpit surfaces
- Wood and foam core stringers, encapsulated by hand-laid fiberglass, integrated to the hull
- Gelcoated and fiberglass-lined bilge areas
- Molded in hullside windows with opening ports
- Poly rubrail with 316L SS cap
- Eight 12" stainless steel cleats for lines
- Tiara custom composite hardtop, aluminum windshield frame with tempered safety glass, safety handrails and a windshield wiper system with two washer/wipers; Hardtop includes powered sunroof
- LED navigation and lighting
- Underwater lights, (4) multi-color LED

## FOREDECK

- Bomar® extruded aluminum opening forward deck hatch with built-in Ocean Air® screens and privacy covers
- One-piece, welded 316L SS 1 1/4" bow rail, staff and Tiara burgee
- Flush forward anchor locker with overboard drain and fresh water washdown
- Concealed Lewmar CPX3 automatic rope/chain anchor windlass system with Lewmar's handheld tethered deluxe remote control and a switch at helm; Includes one 12" stainless steel foredeck cleat, 50' chain rode, 200' rope rode, 20 kg/44 lb. Lewmar® DTX stainless steel anchor and Ultra Flip swivel

## STANDARD EQUIPMENT

- Windshield cover
- Recessed chaise lounge sunpad with cup holders and handholds; Upholstered in your choice of Ultraleather® and includes weather cover.

## TRANSOM AREA

- Single transom entry door with stainless steel frame and hardware from swim platform
- Stainless steel grab rails on transom
- Transom storage compartment with fiberglass liner and one-piece actuated door; Dedicated storage with easy access to items and large opening lid to trunk space
- Two 10" stainless steel pop-up cleats
- 63" integrated swim platform with telescoping stainless steel swim ladder
- Recessed transom shower, hot and cold water
- Fresh water washdown outlet with 25' blue hose
- Raw water washdown outlet with 25' grey hose
- 120V GFI outlet
- Electric grill with refrigerator below

## AFT COCKPIT

- Makefast Marine® powered sunshade
- Engine access in cockpit sole
- Molded-in portside step to deck walkway; Safety handrails above deck walkway steps
- Molded-in steps to swim platform; Safety handrails above steps
- Cockpit LED courtesy lighting with remote control
- Portside aft facing seat with storage below
- See Salon and Helm Area for main stereo component details; Two exterior JL® Audio component speakers, one JL Audio® subwoofer and Fusion® remote
- High gloss teak aft cockpit table with adjustable base
- Weather covers for cockpit furniture
- Six exterior accent pillows
- Aft HD cockpit camera

## INTERIOR GROUP

- Architectural teak interior wood with grain-filled finish and Chilewich® wall covering throughout
- 120V outlets throughout
- 12V LED lighting throughout
- Interior pillow package

## SALON AND HELM AREA

- Powered sunroof
- Aft window and sliding doors with duette blinds
- Duette blinds for port and starboard salon windows
- 40" 4K Smart TV mounted on a hi-lo actuator (concealed when not in use) and storage compartment; includes soundbar and Blu-Ray player
- Fusion® UHD multi-zone stereo system powered by JL Audio® digital amp with four JL Audio® interior speakers and one JL Audio® 8" subwoofer speaker with tuned enclosure

- Sirius® satellite weather and radio ready (subscription necessary but NOT included)
- Dometic 32,000 BTU salon air conditioning system
- Opening port and starboard side windows
- Stidd® dual helm seat in Ultraleather® with ramped fore and aft adjustment; Includes Volvo® Joystick and Garmin® GRID remote in armrest
- Port U-lounge and high gloss teak table on stainless steel pedestal with seating for up to six
- Starboard side loveseat
- Helm with drink holders, 12V and 120V outlets and leather-wrapped steering wheel

## CENTRAL GALLEY

- Safety handrail at steps to upper salon
- Quartz countertops
- Stainless steel undermount sink with hot/cold water faucet
- Recessed two-burner electric cooktop with exhaust fan and lid
- 120V drawer units - one two-drawer refrigerator and one single-drawer freezer
- Microwave/convection oven
- Six storage drawers on port side and two overhead cabinets on both port and starboard sides
- Upper storage cabinets
- Waste receptacle

## OWNER'S STATEROOM

- Private entrance to owner's stateroom and head
- Full beam owner's stateroom with hullside windows for natural lighting and blinds for windows; Opening ports for ventilation in owner's stateroom and head
- Carpeted flooring
- Queen size pedestal berth with innerspring mattress, coverlet, pillow shams, accent pillows, mattress pad, luxury linen sheets and storage under berth
- Starboard side lounge
- Starboard side cedar backed hanging locker
- Port side dresser drawer storage
- Centerline cedar-backed hanging locker
- Indirect lighting
- Two LED reading lights
- Dometic 16,000 BTU air conditioning system for owner's stateroom and owner's head





- 29" LED TV and Blu-Ray player
- Four JL Audio® speakers with Fusion® stereo

#### OWNER'S HEAD

- Full frame door with private owner's stateroom entry
- Fiberglass stall shower with sump pump, glass shower door and teak seat
- Solid surface countertop with solid surface accents, vessel sink and hot/cold water faucet
- Lighted mirror with upper storage cabinet to the side
- Lower vanity storage
- Indirect lighting
- Solid teak wood floor
- VacuFlush® push button toilet
- Waste receptacle
- Exhaust fan
- Air conditioning vent (controls in owner's stateroom)
- GFI protected outlets

#### GUEST STATEROOM

- Private entry to VIP stateroom and head
- Solid teak floor with carpeted riser
- Queen size pedestal berth with Innerspring mattress, upholstered headboard, coverlets, sheets, accent pillows, pillow shams and storage under berth
- Indirect LED lighting
- Cedar-backed hanging locker, starboard
- Upper hullside cabinets
- Hullside windows for natural lighting and blinds for windows
- Opening deck hatch
- Two JL Audio® speakers with Fusion® remote
- Two LED reading lights, independently switched
- LED TV and Blu-Ray player
- Dometic 10,000 BTU air conditioning system

#### GUEST/DAY HEAD

- Full frame doors with entry from guest stateroom and atrium
- Fiberglass stall shower with sump pump, glass door and teak seat
- Solid surface countertop with solid surface accents, vessel sink and hot/cold water faucet
- Lighted upper medicine cabinet with mirror

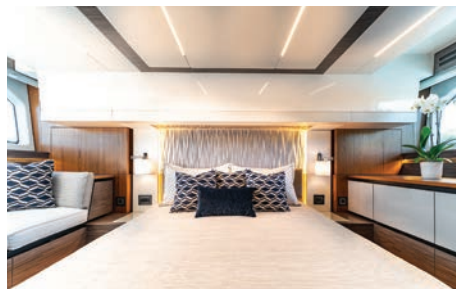
- Lower vanity storage
- Indirect lighting
- Solid teak wood floor
- VacuFlush® push button toilet
- Waste receptacle
- Exhaust fan
- Air conditioning vent (controls in VIP stateroom)

#### ATRIUM LOUNGE

- Lower lounge that converts to a pullman style upper berth and bunk style lower berth, with storage underneath
- Solid teak wood floor
- Indirect lighting
- Privacy curtain

#### INSTRUMENTATION, SAFETY AND EQUIPMENT

- Tiara custom 12V/24V DC and 120V/240V AC electrical system with monitor panel in the salon, master distribution panels in starboard salon loveseat
- 120V/240V AC 50 amp 65' dockside power cord with Glendinning® cable recoiler and adaptor for 30 amp service
- Cable TV inlet and cabin outlets
- TV and AM/FM radio antennas
- Westerbeke® 15kW diesel generator with sound shield
- Battery chargers, 100 amp and 16 amp
- 12V/24V multiple bank battery system with batteries and remote battery switches; Four engine batteries, two 8D house batteries
- Electrical bonding system
- Volvo® engine package includes:
  - DPS (Dynamic Positioning System)
  - Volvo® Assisted Docking
  - Active Corrosion Protection
  - Volvo® electronic engine controls and steering system
  - Low speed, cruise control and trip computer software
  - Volvo® IPS Joystick Plus control
  - Volvo® exhaust bypass
  - Volvo® Glass Cockpit integrated electronics package:
    - Two Garmin® 8616 Series 16" displays with GRID armrest remote and joystick steering
    - Garmin® autopilot
    - Garmin® Fantom 54, 48" open array radar
    - Garmin® VHF with handheld radios
    - 1kW transducer
    - Aft facing HD Cockpit Camera
- High output alternators, 115 amp
- Ritchie® SuperSport SS2000 compass
- Propellers
- Trim tabs
- Zinc sacrificial anodes
- Engine room with lighting and acoustical insulation
- Racor® fuel filters/water separators, engines and generator
- Raw water intake strainers, engines and generator
- Vibration isolating mounts, engines and generator
- Plate mounted, thru-bolted engine system
- Three port oil changing system, main engines and generator
- Three automatic/manual electric bilge pumps with monitors at helm, 2,000 GPH each; one forward, one mid and one aft
- Two aluminum fuel tanks, total capacity 500 gallons, with in-line fuel vent filters and fuel shut-off valves on top of tanks
- Dockside water inlets in aft deck
- Fresh water tank with 135 gallon capacity
- Holding tank, 68 gallons, with deck discharge and holding tank vent filter
- Fresh water tank/holding tank monitor
- Fresh water pressure system with 10 GPM pump
- Water heater, 11 gallons
- Kahlenberg® chrome dual trumpet air horn
- Fireboy clean agent fire extinguisher system for engine room
- Four handheld fire extinguishers
- Carbon monoxide detectors and smoke detectors in all staterooms and salon
- Eight 5/8" x 30' black dock lines
- Dedicated storage for dock lines
- Eight Tiara Yachts life vests (domestic boats only)
- USCG approved electronic flare
- USCG/international LED navigation lighting
- NMMA certified using ABYC standards
- International certification options available (European CE and others)
- Engines and Boat Systems Are Shipped Winterized



# C49

## DIESEL ENGINE

For base boat pricing, please contact your factory authorized Tiara Yachts dealer.

- Twin Volvo® IPS15 800 with Glass Cockpit, Volvo Assisted Docking and Joystick Plus Control, 600 HP

## MECHANICAL GROUP

- 12V Inverter, ProSine® 1800..... 5,490
- Forward deck shore power..... 6,210  
*(includes 25' cable TV cord, 25' 50 amp shore power cord)*
- Seakeeper 9 Gyro..... 132,440
- Macerator system for head..... 1,630
- Reverse osmosis water maker, 38 GPH ..... 31,500
- Raw water anchor locker washdown..... 1,010
- All chain windlass with remote at helm..... 3,330  
*(in lieu of standard rope windlass)*
- Apply Propspeed® to Drives and Props ..... 1,230
- ElectroSea® Strainer..... 24,300

## HULL, DECK & AFT DECK GROUP

- Teak Swim Platform ..... 28,510
- Nautical Structures® hydraulic swim platform ..... 56,840
- Teak decking, Nautical Structures® hydraulic swim platform ..... 77,950
- Teak decking, aft cockpit..... 23,670
- Integrated dingy chock system..... 10,180
- Phantom® retractable screen door with magnetic latch ..... 5,150
- Aft cockpit carpet ..... 1,320
- Cockpit TV ..... 2,970

## ELECTRONICS

- Engine room camera ..... 2,870
- Volvo® Joystick Plus, cockpit..... 21,250
- ACR® RCL 100 LED remote spotlight..... 3,590  
*(mounted on bow)*
- Pre-wiring for satellite TV..... 1,580
- Satellite Ready TV Mast ..... 3,380  
*(replaces standard radar mast)*

## INTERIOR GROUP

- Beverage cooler in port galley..... 1,170  
*(in lieu of storage cabinet)*
- Garbage disposal..... 960

## OPTIONAL EQUIPMENT

- Ice maker for starboard galley single drawer freezer..... 3,510
- Central vacuum ..... 860
- Utility Room ..... 4,930  
*(includes door, stackable washer/dryer unit, and is in lieu of atrium lounge)*
- Atrium Lounge Door..... 2,660  
*(in lieu of curtain, included with utility room option)*
- Washer/dryer (110V) combination unit in owner's stateroom..... 6,630  
*(in lieu of lower centerline hanging locker, not available with utility room option)*

## INTERNATIONAL OPTIONS

- International conversion package  
Not available on domestic boats.  
Pricing thru international dealers.  
Specify county below:

## UPHOLSTERY & SOLID SURFACE SELECTIONS

Ultraleather & Fabric Options	Lighthouse	Whitewater	Coast	Sea Cliff
	White	Beige	Dolphin Grey	Grey
Cockpit & Sunpad	<input type="checkbox"/>	<input type="checkbox"/>	<input type="checkbox"/>	<input type="checkbox"/>
Stidd® Helm Seat	<input type="checkbox"/>	<input type="checkbox"/>	<input type="checkbox"/>	<input type="checkbox"/>
Salon Sofas	<input type="checkbox"/>	<input type="checkbox"/>	<input type="checkbox"/>	<input type="checkbox"/>
Atrium Lounge	<input type="checkbox"/>	<input type="checkbox"/>	<input type="checkbox"/>	<input type="checkbox"/>
Stateroom Berth Keepers	<input type="checkbox"/>	<input type="checkbox"/>	<input type="checkbox"/>	<input type="checkbox"/>
Owner's Stateroom Lounge	<input type="checkbox"/>	<input type="checkbox"/>	<input type="checkbox"/>	<input type="checkbox"/>
Interior Accent Color Package	Night Sky	Ocean Wave	Sandy Beach	Tangerine Bay
	<input type="checkbox"/>	<input type="checkbox"/>	<input type="checkbox"/>	<input type="checkbox"/>
Solid Surface Countertops	Aurora Ash	Aurora Cream	Weathered Aggregate	
	Trunk Lid	<input type="checkbox"/>	<input type="checkbox"/>	<input type="checkbox"/>
Accents in Heads	<input type="checkbox"/>	<input type="checkbox"/>	<input type="checkbox"/>	
Quartz Countertops	Coarse Peppered Leather	Bianco Marmor	Valente Pearl	
	Galley	<input type="checkbox"/>	<input type="checkbox"/>	<input type="checkbox"/>

## PAINT SELECTIONS

Axalta® Hull Paint..... Standard  
Specify Color Below:

Axalta® Bootline Paint..... Standard  
Specify Color Below:

Axalta® Paint Accent Stripe..... 2,790  
Specify Color Below:

One Quart Hull Paint..... 690

Please contact your dealer for freight, prep, and commissioning charges along with tax, title, and registration fees as these are not included.

NOTE: Specifications are based on available information at time of printing. Actual specifications may vary. Tiara Yachts reserves the right to change product line specifications, equipment, color schemes, and pricing, or to discontinue models at any time without notice or obligation.

EFFECTIVE SEPTEMBER 19, 2023